

SHARE:

[Join Our Email List](#)



Friends of Sligo Creek

Newsletter

June/July 2025

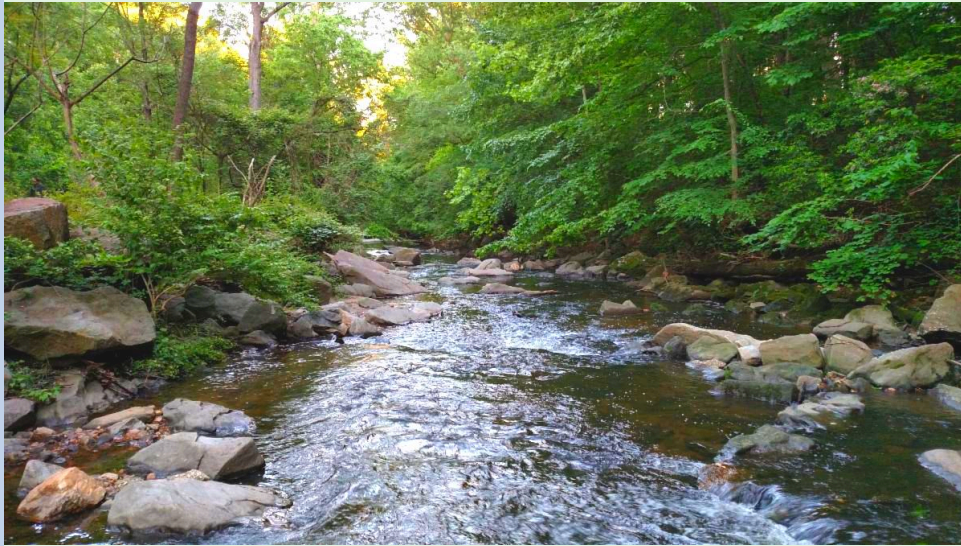


Photo by Xavier Courouble

In this issue:

Sligo Floodwaters

Illegal Dumping Continues

FOSC Receives Wayne Goldstein Award

Sponges...in Sligo?

Spotted Lanternfly tips n' tricks

**Landscape Companies Seek Gas Blower
Seasonal Exemption**

Summer WQ: That's Still a Lot of Red

Plastic Free July

Sligo's Salt Monitoring in the News

Upcoming Events

FOSC Store

Recent Nature Sightings

SLIGO WATERSHED

Sligo Floodwaters

The storm that caused flooding across the Sligo watershed a few days ago was short but intense, pounding already saturated soil. Many news outlets carried the story.

[NBC video news article](#)

About the flood - Washington Post
New York Times article about Sligo flooding

The dangerous flash flooding closed all of Sligo Creek Parkway for a time. Sligo Creek rose 10 feet in 30 minutes. The USGS gage at Sligo near Maple Ave. in Takoma Park showed that the creek flow reached 4,000 cubic feet per second (CFS); its normal rate is 5 CFS.





From top: just east of Colesville (Afzal), near Wayne Ave (Gagne), near Maple (Edelson), near the powerline meadow (Stith); day after near Hilltop (Burson). Below, a video of clips taken between Wayne and Piney Branch (Bowser).



Many other videos of the flooding were shared on [the FOSC listserv](#).

Though it was strong, the storm was not the a record breaker. Sligo has had similar storms.

Ann Marie Conway shared this memory on FOSC's Facebook page:

"I lived on Sligo Creek as a small child and still remember the boats visiting us in our front yard to make sure we were OK. My parents rolled up the rugs and stacked the furniture!"

Climate change is the main contributor to this Sligo Creek flooding and other flooding events such as in Texas. The warmer the air, the more moisture it holds, resulting in greater downpours in a short period of time when it rains. Other factors that contribute to flooding include development and inadequate stormwater management practices.

Paul Chrostowski, environmental scientist and longtime member of the FOSC Water Quality and Advocacy Committees writes:

Recognize that this was NOT an extreme event. My gauge 3.53 inches (close to the NOAA Atlas 14 site); nearby, Kit Gage reported 3.49". These values are within the instrument error and, therefore, virtually the same. Based on my observations, the bulk of the rainfall was delivered in about 2 hours. Using the Atlas 14 database, this equates to about a 55-year storm. The USGS maximum stage was 7.52 feet, putting us in a USGS "moderate flood" situation. Although emergency response was needed, individual homeowners were impacted, and there is a general mess on some southern MoCo streets, this would not qualify as an extreme (low probability, high consequence) event. It is complicated by the fact that our soils were already saturated (the "antecedent water condition"). My station recorded 2.23 inches for the week prior to this, and my soil moisture meter showed 100% saturation at a 1 ft depth before this latest storm.

For context, Busick NC received 31 inches and Asheville NC received 14 inches over a 12-hour period during Helene last year. This was a 1000-year event. The July 4th floods in Texas are difficult to compare because of the lack of data near the Guadalupe river. Radar estimates, which are less reliable than rain gauge measurements, reported anywhere from 8 to > 20 inches although the time durations are unavailable.

Most of our stormwater conveyances in the Sligo watershed are designed to handle a 10-year storm which is why there was so much street flooding. One can only imagine with fear what a 1000-year event would result in here.

Illegal Dumping Continues

For over a month, Nick Clements, FOSC's Litter Hotspot coordinator, has encountered construction/demolition debris dumped along Sligo Creek Parkway. After posting photos to the FOSC listserv, many other parkgoers posted locations of debris dumped all along Sligo Creek, sometimes in bags, sometimes placed near bridges over the creek. The blatant and continuing dumping is done at night, perhaps from a pickup truck, given that the bags appear at regular intervals along the roadside, some split open, some too heavy to have been carried there.

This spate of illegal dumping coincides with restrictions placed on contractor waste at the MoCo transfer station while two of the four trash compactors used to process waste are shut for major repairs.

Despite DEP's notices and direct outreach to the contractor community, illegal dumping appears to be the easiest option for the contractor(s) involved. The use of trail cameras to possibly record illegal dumping would need to be conducted by Park Police.

The restriction at the transfer station is due to be lifted when the repairs are complete, scheduled to be the second week of August.

Please continue to report any dumping you see to MoCo at 311 or 240-777-0311, or [through the link on the DEP website.](#)

Thank you to everyone who has reported and removed/"moved to the curb" whatever they can.



Nick and many other people have been picking up the debris and moving it to the roadside so that Parks can pick it up.

Karen describes the debris she encountered:

"The bags I've found are heavy and seem to be from construction. I couldn't carry them because of their weight, but there were also vent covers, a medicine cabinet glass door, and pieces of finished boards (sanded and painted), among other items strewn along the parkway. They were all new. I imagined that someone discarded unused materials after completing a job. Whoever it is may not have storage space and tosses what they don't immediately need.

A neighbor came back with his car and picked up two of the bags, leaving at least five more."

FOSC

FOSC Honored with the Wayne Goldstein Award

The Montgomery County Civic Federation recognized Friends of Sligo Creek with the 2025 Wayne Goldstein Award at their 100th anniversary celebration in Wheaton. The Wayne Goldstein Award recognizes outstanding public service contributions by an individual or

group in Montgomery County. The Montgomery County Council, County Executive Marc Elrich, and the Maryland State District 20 team also formally recognized FOSC.

This award recognized the contributions of all our volunteers, removing litter and addressing litter hotspots; "weed warring" invasive plants that squeeze out native plants crucial to the ecosystem; monitoring water quality in Sligo and Long Branch, and winter salt levels in Sligo and its branches; for our outreach and education to schools, communities, companies and other civic organizations; and advocating for the Creeks and parklands to protect and enhance this vital part of our community into the future.

We also recognize that our success is also made possible by our partners including Montgomery Parks, the Department of Environmental Protection, Nature Forward, Potomac Conservancy, Alice Ferguson Foundation, Trash Free Maryland, Takoma Foundation, and the Chesapeake Bay Trust. Finally, we need to recognize all our members who have generously made donations to fund our initiatives, as well as organizations that have given us grants.

It takes a lot of caring people and organizations to protect the ecological health of our watershed.

Thank you, MoCo Civic Federation, for recognizing all that FOSC volunteers do. Together, we are making a difference.

~ Elaine Lamirande, FOSC President and Ed Murtagh, FOSC Vice President



From Left to right: Councilmember Gabe Albornoz, Councilmember Laurie-Anne Sayles, FOSC Vice President Ed Murtagh, FOSC President Elaine Lamirande, County Council President Kate Stewart, Councilmember Will Jawando, and Councilmember Kristin Mink.



State District 20 Delegate Lorig Charkoudian with Ed and Elaine.

Sponges...in Sligo?

No, really...it's not a joke.

While doing an assessment of freshwater mussels on the Maryland side of the Anacostia watershed, the team at Anacostia Watershed Society found abundant sponge colonies at three assessment sites in Sligo.

Freshwater sponges are poorly known aquatic organisms. They are filter feeders, trapping tiny organisms in the water through their - yes -spongy bodies, and from symbiotic algae. Sponges are also food for ducks, crayfish, and a variety of aquatic insects. They grow on rocks and other submerged surfaces including trash.

On Saturday, Sept. 6, Jorge Bogantes Montero, the Natural Resources Program Manager at the Anacostia Watershed Society and "discoverer" of the sponges, will lead a walk to observe Sligo's sponge colonies. See details in the Upcoming Events section.



A Fragile Freshwater Sponge (*Eunapius fragilis*) a native species of the Anacostia River

(photo: Anacostia Watershed Society)

NATURAL HISTORY

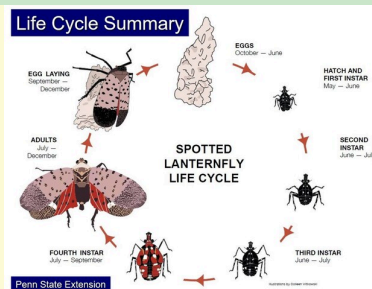
Spotted Lanternfly Tips n'Tricks

Spotted lanternflies (SLF) are an invasive planthopper that use a piercing-sucking mouthpart to feed on stems, leaves, and bark.

Their waste, a sugary honeydew, is host to sooty mold. Because they congregate when feeding, sooty mold can quickly build up on leaves (and anything else found below), reducing the host's ability to photosynthesize, weakening and potentially killing it.

Management tips:

- Do nothing; some birds eat them.
- Smash them with a fly swatter or catch them in a net.
- Hand vacuum (or use a shop vacuum to remove them from a structure) then bag and throw them in the trash, or smash them.



Click the graphic to see a larger version. (Source: Penn State Extension)

-Catch them with a jar of soapy water held near them
- they will dependably jump sideways into the jar and perish in the soapy water.

-Use the empty water bottle trick. Hold an empty water bottle over the SLF and they will jump into the bottle. Cap and freeze, or add a little soapy water, cap, and shake. [View Youtube demo.](#)

-Scrape their egg masses from your trees, fences, outdoor furniture, even your car. A female lanternfly lays 3 egg masses.

Every lanternfly dispatched means fewer egg masses laid. **Every egg mass removed prevents 30-50 adults from hatching in the spring.**



Egg masses (about 14) laid close together on tree bark.

(Source: Spotted Lanternfly Team, Maryland Department of Agriculture)

Lanternfly resources:

[**PennState Extension resources**](#)

[**UMD Extension**](#)

MD Dept. of Agriculture reporting - email a photo and location to:
[**dontbug.md@maryland.gov**](mailto:dontbug.md@maryland.gov)

From the MD Dept. of Agriculture: Circle Traps

"Circle traps passively trap spotted lanternfly. They do not require a lure or any chemicals. Spotted lanternflies are poor flyers and climb up trees to feed on stems and jump to glide to their next location. The circle trap cuts off access to the tops of trees and funnels them into a plastic bag. This bag can be replaced and the old one thrown away.

We do not recommend sticky tape or glue traps, as they have a high rate of by-catch, often leading to beneficial insects, small mammals, reptiles and even birds getting caught.

You can purchase pre-built traps online. Or you can [follow a tutorial here to build one yourself](#). It is important to remember that the mesh must wrap around the entire tree. If not, spotted lanternflies can bypass the trap. It may be necessary to use two traps to fully cover a tree."

Please be sure to view the entire newsletter including the Recent Nature Sightings by clicking on "View entire message" or similar text at the bottom of your browser.

Landscape Companies Seek Gas Blower Seasonal Exemption

Apparently at the behest of several large landscaper companies, MoCo Councilmember Alborno and co-sponsors introduced **Expedited Bill 19-25 Noise Control - Leaf Removal Equipment - Seasonal Exemption** which would amend the MoCo ban on gas leaf blowers to allow their use every year from October through December (the rest of the year only electric leaf blowers), just weeks after the ban went into effect, and 2 years after its initial passage.

FOSC opposes the proposed seasonal exemption. Landscape companies have had 2 years and 2 levels of subsidies to switch from gas to electric leaf

blowers. Gas blowers are noisy, polluting, and unhealthy for users and neighbors. The trade journal [Lawn and Landscape praises investing in battery-powered lawn equipment](#) as a smart financial decision for companies. MoCo has taken a forward-looking step to reduce human and environmental impacts of blowing leaves; we believe the County should not go back to gas powered leaf blowers.

FOSC and several individual members testified in opposition to the amendment gutting the law at full Council. The hearing on the bill is expected to take place at the Transportation and Environment Committee meeting scheduled for Monday, July 28 from 1:30pm - 4:30pm.



WATER QUALITY/STORMWATER

Summer Water Quality Test Results: That's Still a Lot of Red

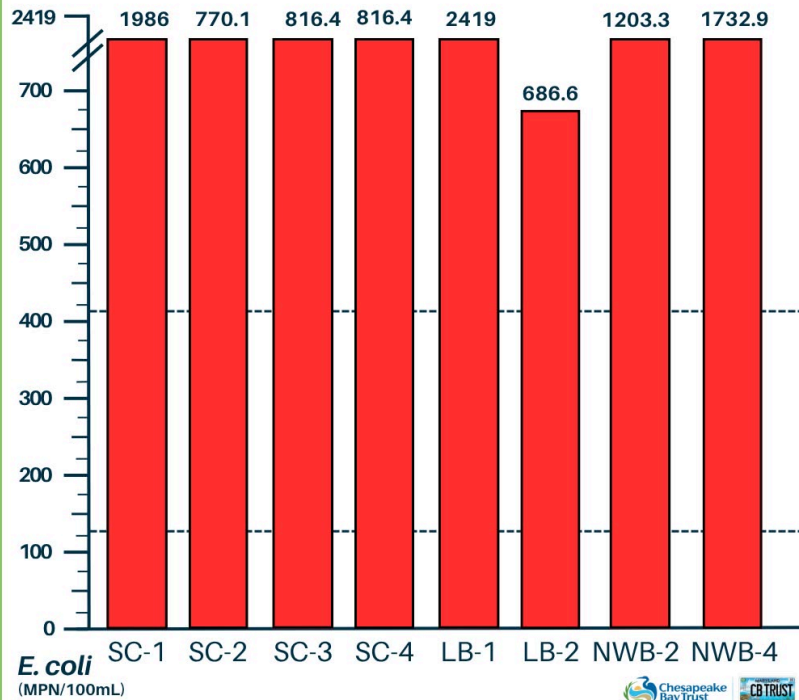
The Summer Water Quality Testing program results continued to be well above the cut-off for safe contact, though the July 9th readings are roughly half the level of readings two weeks prior. Rainy weather likely helped dilute E. coli levels, though rain can also stir up sediments and wash more bacteria and pollutants into the creeks.

Upper Anacostia - Montgomery County

July 9th, 2025 - Single Sample *E. coli* Value



ANACOSTIA
RIVERKEEPER



E. coli
(MPN/100mL)



Site Key

Sligo Creek

SC-1 @Fleetwood Terr.
SC-2 @Maple Ave
SC-3 @Wayne Ave
SC-4 @Dennis Ave

Long Branch

LB-1 @Rolling Terr.
LB-2 @Becca Lily Park

Northwest Branch

NWB-2 @Burnt Mills
NWB-4 @Lamberton Dr

The takeaway -- the results are well above the 410 MPN/100mL threshold for safe contact with the water for humans and pets in Sligo, Long Branch and NW Branch.

LITTER

Plastic Free July

Americans generate well over 36 million tons of plastic waste per year. Plastic Free July seeks to reduce single use plastics. Plastic water bottles, cutlery, and packaging are particularly targeted for reduction.

- **Recycle right** #1 plastics are recyclable in Montgomery County, #6 is not. Can't avoid a product in plastic packaging? Choose the item with the least plastic packaging, and/or made with #1.
- **Buy in bulk as much as possible** instead of buying single-serve or travel-sized items.
- **Carry a reusable water bottle** instead of buying bottled water. Having a family gathering or team event? Ask everyone to bring a reusable water bottle.
- **Use durable, reusable silverware or a travel mug** instead of disposable cutlery or cups. Those red plastic party cups are unrecyclable #6.

Bio-plastics made from "bio-mass" are being developed that have potential to be eco-friendly, biodegradable alternatives to plastics made from petroleum.

Biology Insights reports: "One prominent category is polylactic acid (PLA), derived from renewable resources like corn starch or sugarcane. PLA is widely used in packaging, disposable tableware, and medical implants due to its biodegradability and versatility. Its compatibility with conventional plastic manufacturing equipment makes it an attractive option for industries transitioning to more sustainable practices."

April 29, 2025 [Biologyinsights.com](https://www.biologyinsights.com)

BIO-BASED PLASTICS	VS	TRADITIONAL PLASTICS
Plant-sourced		Fossil fuel-based
PLA #7		#1 - #7
Lower carbon emissions		Higher carbon emissions
Compostable		Recyclable
Degrades within months to years		Degrades in hundreds to thousands of years

Photo: [compostnashville.org](https://www.compostnashville.org)

WATER QUALITY/SALT

Sligo's Salt Team in the News

FOSC Winter Salt team's monitoring work was featured in a Washington Post article on June 4, 2025. Titled [A salt crisis is looming for U.S. rivers](#), it describes the prevalence of over-salting in D.C. and other major northern inland cities, impacting rivers, ground water, and soil. Thank you, winter salt volunteers!

SLIGO CREEK AND LONG BRANCH

Always Wondered About...

- Wondering about a mammal, amphibian, reptile, fish, or bird?
- See problems in the creeks or parklands you think FOSC could help with?
- Heard an interesting speaker you think FOSC could host?
- Have an idea you want FOSC to know about?



[It takes just a moment to let us know here.](#) We'll figure out what we can do and let you know!

CALENDAR OF EVENTS

Upcoming Events & Volunteer Opportunities

Watch the [FOSC Home page](#) and the [FOSC Calendar of Events page](#) for more upcoming FOSC programs and volunteer events.

Sunday, July 27 from 9:00pm - 11:00pm

Moth Outing

16th Place just east of Drexel St, at the entrance to the Pepco Powerline Meadow

Please RSVP to Michael Wilpers at wilpersm@gmail.com (remove the spaces before sending).

On this evening outing, you will experience the diverse world of moths and other night-flying insects led by Tony Futcher, Professor of Entomology at Washington Adventist University. We'll attract moths in the meadow to a white screen illuminated by a strong light. Over 159 moth species have been reported in Sligo Creek/Long Branch on iNaturalist. In fact, there are many more moth species than butterfly species, and like butterflies, moths are excellent pollinators.



Delicate Cynia Moths
(Adrienne)



Morning-Glory Plume moth
(kristin-marie)



Curved-toothed Geometer Moth
(Ross Campbell)



Giant Leopard Moth
(Enoc Fuentes)



Isabella Tiger Moth caterpillar
(ofap1)



Desmia moth
(kristin-marie)

In addition to moths, we expect to see a wide variety of other insects. The greatest number will probably be caddisflies, treehoppers, and leafhoppers.

In smaller numbers, we could see aphids, assassin bugs, beetles, crane flies, and hoverflies.

It's possible that we'll even see a few sawflies, bees, lacewings, mantidflies, antlions, grasshoppers, cicadas, or crickets.

All in all, it will give us a window into nature's bustling activity while we humans sleep.

The details:

- **Meet where 16th Place** dead-ends at the entrance to the PEPCO powerline meadow, just east of Drexel St. [38°58'41.7"N, 76°58'51.8"W]
- **Intended for** adults and older teens.
- **In the event of** heavy rain, the event will be cancelled.
- **Please RSVP to this email address so we can reach you in case of cancellation: wilpersm @ gmail.com (remove the spaces before sending).**
- **Wear a long sleeved** shirt and long pants tucked into your socks. Insect repellent is OK to use.

August 14 from 10:00am - 12:00pm

Litter Hotspot Cleanup

Sligo at Kemp Mill Shopping Center, at the back

This area supports a lot of wildlife. Join other FOSC volunteers to help protect it from plastic and other forms of pollution.

We'll meet at the trailhead at the back of the Kemp Mill shopping center.

Please bring gloves and trash grabbers if you have them. We'll provide trash and recycling bags (and gloves and grabbers if you need them). Dress for the weather and bring a (reusable) water bottle.

Saturday, August 16 from 9:00am - 12:00pm

Fantastic Fungi and Where to Find Them

Mid-Sligo location provided to registered participants

[Register here](#)



FOSC is thrilled to host Serenella Linares, Facility Director at Mount Rainier Nature Center, for a fungi talk and walk exploring Sligo's fungi. From mushrooms in the forest to spores on the moon, we will explore the mysteries of the kingdom Fungi and their importance to us all.

Learn about the natural history of these fascinating creatures, their ecological roles, their ever-changing taxonomy, and how these organisms intersect with different environments. Discover how crucial fungi are in human lives and what ecosystems host their amazing diversity.





Clockwise from left: Polyporus; Agaricus; Tremellodendron pallidum; and Physcia (photos by Serenella Linares, except for Tremellodendron pallidum by redcedar)

[Register here](#) - You must register so we can reach you in case the event has to be postponed.

Serenella Linares is the Facility Director at Mount Rainier Nature Center. She has worked been Director of Adult Programs at Nature Forward, managing Natural History Field Studies and educational programs; assistant park naturalist with the Prince George's County Department of Parks and Recreation, 2011-2016 at an urban nature center serving predominantly African-American and Hispanic communities.

She holds a bachelor's degree in biology from Universidad Metropolitana de Puerto Rico, a master's degree in atmospheric science from Howard University, and graduate training in mycology from University of Maryland.

When Ms. Linares is not teaching, she explores natural areas, photographs plants, insects, and fungi, and participates in citizen science projects.

Saturday, September 6 from 10:00am - 11:30am

Sligo Sponges

Mid-Sligo location provided to registered participants.

[Register here](#)

On Saturday, Sept. 6, Jorge Bogantes Montero, the Natural Resources Program Manager at the Anacostia Watershed Society and "discoverer" of the sponges, will lead a walk in mid-Sligo to observe Sligo's sponge colonies. Learn more about these unexpected aquatic organisms. They are filter feeders, trapping tiny organisms in the water through their - yes -spongy bodies, and from symbiotic algae. Sponges are also food for ducks, crayfish, and a variety of aquatic insects. They grow on rocks and other submerged surfaces including trash.

All are welcome, but [you must register](#) so we can reach you if we need to cancel due to the weather.

Sunday, September 7 from 10:30am - 6:30pm

Takoma Park Folk Festival

Piney Branch Rd. between Gist Ave. and Ray Dr.

[Sign up for a volunteer slot here.](#)

Have fun, enjoy the live music and help out at the FOOSC table at this popular community event on Sunday, Sept. 7.

Join other FOSC volunteers at the FOSC table for a couple of hours between 10:30am and 6:30pm, letting people know about the park and creek, upcoming events like Sweep the Creek, and inviting people to join FOSC.

We'll have experienced FOSC members at the table throughout the day. Listen to the music, chat with people, or help run FOSC activities for kids.

[Sign up for a volunteer slot here.](#)

Thank you in advance for supporting FOSC!

FOSC STORE/LISTSERV

T-Shirt, Ball Cap, or a Fundana?

Order your stream bug fundana, t-shirt, ball cap, mug, poetry book from the [FOSC store](#). You can have your order mailed to you or opt to pick it up locally. All sales support FOSC programs. Thank you.



JOIN FOSC / JOIN THE FOSC LISTSERV

The next drawing for a t-shirt, cap or fundana - your choice- will happen in summer 2025. We're working on a date. To enter the drawing:

- **If you are already a FOSC member**, join the [main FOSC listserv](#) to be automatically entered in the drawing.
 - **If you are not yet a FOSC member** and are reading this newsletter from your neighbor's copy, please join FOSC [at this link](#)! You will also be entered in the drawing.
-

FOSC GIVING

**Donating to FOSC keeps our many projects going.
You can give anytime and in any way that suits you!**

**Make a gift, set up a monthly gift, make a birthday gift,
a gift in honor of someone, or a gift in memoriam.**

Just use this link: [Donate here](#) or use the Donate button below.

It's simple and secure.

Donate



If you prefer to write a check, please send it to:
FOSC, P.O. Box 11572, Takoma Park, MD 20913

Your gift is greatly appreciated - thank you!

NATURAL HISTORY

Recent Nature Sightings in Sligo



Slaty Skimmer (dragonfly) at the Forest Glen wetlands on July 1 (dtread1)

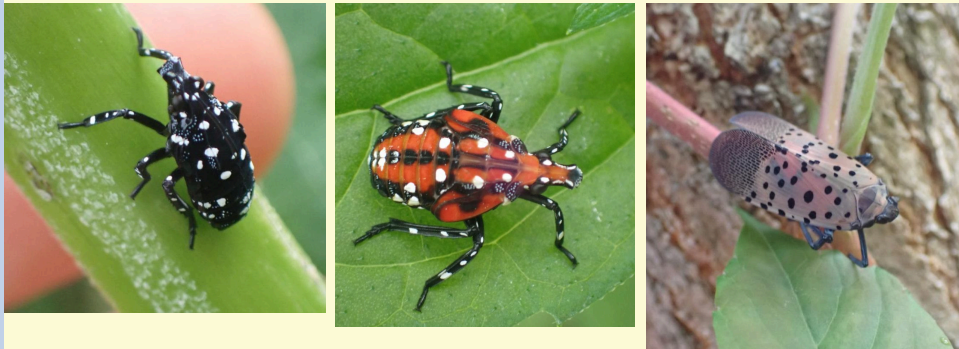


Tulip-tree Beauty moth
(two color morphs)

Left: near Green Holly on June 29 (mstrecker).
Right: the trail below Dennis Ave. on July 2 (timwatkins)



Eastern Gray Squirrel coping with the heat near Green Holly on June 30 (mstrecker)



Spotted Lanternfly

From left: early instar (nymph phase), late instar, adult along the Parkway and on Franklin on June 17, July 15, and July 13 (hughrand)

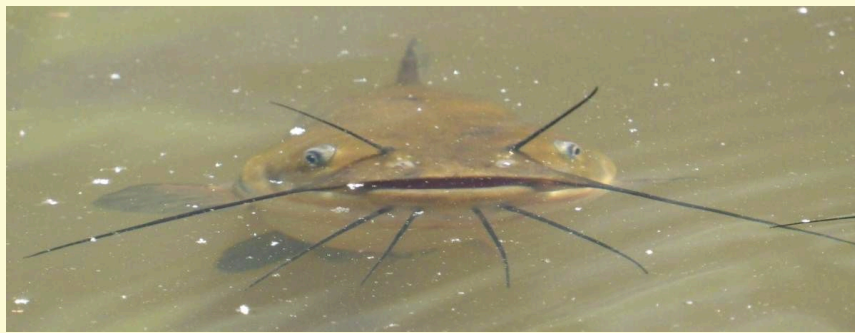


Green Heron at the Forest Glen wetlands on July 4 (dtread1)



Slime Molds

Left: Dog Vomit Slime Mold near Chicago & Islington July 6 (allenbrowne)
Right: Chocolate Tube Slime near Kennebec & Roanoke July 6 (francesca_venti)



Brown Bullhead

Catfish breeding at the Forest Glen wetlands

top: catfish adult at the breeding area, June 20. A female lays up to 10,000 eggs;

middle: juveniles, June 20. The parents keep the juveniles in a school for a month;

bottom: part of a school of juveniles close up, June 12
(dtread1)



Wetland Wildflowers

powerline meadow near 16th Place on July 4 (wilpersm)

Left: Allegheny Monkeyflower

Right: Seedbox



Unusual Fireflies

Left: July Comets (*Photuris lucicrescens*) on June 30

Right: Black Firefly (*Lucidota atra*) on July 1

Both near Browning (leafgrabenstetter)



Ghostly Mantidflies

Night-flying insects

Top: Say's Mantidfly

Bottom: Green Mantidfly

near 17th & Avalon on June 24 (tony_futcher)

Photo selection and captions by Michael Wilpers (questions or comments, naturalhistory@fosc.org).

All photos taken from the iNaturalist project, "Fauna and Flora of the Sligo Creek Watershed"

([Fauna and Flora of the Sligo Creek Watershed · iNaturalist](#)).

Photo credits reflect those provided in the iNaturalist system.

Need to Reach Us?

President (Elaine Lamirande): [**president@fosc.org**](mailto:president@fosc.org)

Invasive Plants/RIP (Walter Mulbry): [**invasives@fosc.org**](mailto:invasives@fosc.org)

Litter/Sweep the Creek (Ed Murtagh): [**litter@fosc.org**](mailto:litter@fosc.org)

Advocacy (Kit Gage): [**advocacy@fosc.org**](mailto:advocacy@fosc.org)

Natural History (Michael Wilpers): [**naturalhistory@fosc.org**](mailto:naturalhistory@fosc.org)

Stormwater (Elaine Lamirande): [**stormwater@fosc.org**](mailto:stormwater@fosc.org)

Water Quality (Dean Tousley & Anne Vorce): [**waterquality@fosc.org**](mailto:waterquality@fosc.org)

Outreach (Sergio Obadia): [**outreach@fosc.org**](mailto:outreach@fosc.org)

Treasurer (Tom Walton): [**treasurer@fosc.org**](mailto:treasurer@fosc.org)

Webmaster (Christine Dunathan): [**webmaster@fosc.org**](mailto:webmaster@fosc.org)

Newsletter Editors (C. Dunathan & M. Wilpers): [**editor@fosc.org**](mailto:editor@fosc.org)



Friends of Sligo Creek is a nonprofit community organization dedicated to protecting, improving, and appreciating the ecological health of Sligo Creek Park and its surrounding watershed.



[Join FO SC](#)

Friends of Sligo Creek | P.O. Box 11572 | Takoma Park, MD 20913 US

[Unsubscribe](#) | [Update Profile](#) | [Constant Contact Data Notice](#)



Try email marketing for free today!